

COMPANY

PROFILE

Company Details

NAME MECO Engineering Company Limited

ESTABLISHED 1953

GST NUMBER 021-322-075

ADDRESS 81 Breakwater Road
PO Box 6044
New Plymouth Post Code 4310

TELEPHONE 64 6 7510339

KEY PERSONNEL



Telarc
Q-Base Code

Robert Lind – Works Manager
robertlind@meco.co.nz Mobile 021 863 261

Oliver McDonald –Estimator/Project Engineer.
olivermcdonald@meco.co.nz Mobile 021 863 262

Geoff Hale – Estimator /Projects Engineer
geoffhale@meco.co.nz Mobile 021 663 285

Steve DeBruyn –Operations Manager
stevedebruyn@meco.co.nz Mobile 021 663248

Kim Everest – Office Administrator
kimeverestmeco.co.nz

Ian Lind – Managing Director
ianlind@meco.co.nz Mobile 021 863 260

ACCOUNTANTS

Staples Rodway
PO Box 146, New Plymouth

SOLICITORS

Billings Lawyers
PO Box 243, New Plymouth

BANK

ANZ Bank ~ New Plymouth

DIRECTORS

I D Lind E M Lind

STAFF

50+ Tradesmen

INSURERS

QBE Insurance (International) Limited
(Refer declaration)
Public Liability: \$10,000,000.00

Company Services

Meco Engineering Co Ltd offers a comprehensive and competitive engineering service to general Industry within Taranaki, New Zealand, and Worldwide.

Aspects of the service we offer include:

- * Fabrication: heavy plate, vessels, tanks, pipe-work.
- * Structural fabrication and installation.
- * Fabrication: Mild steel, alloy and sheet-metal work.
- * Machining: Turning, milling, shaping and drilling.
- * Plant Maintenance: Installation and shutdown.
- * Hydraulic and Pneumatic repairs and maintenance.
- * Compressor and air systems overhaul, installation and maintenance.
- * Crane, Telehandler, Hiab truck – trailer, scissor-lift hire
- * Stainless steel, aluminium fabrication and insulation.
- * Coded qualified welding.
- * Mechanical maintenance and installation.
- * Commercial & Domestic roller door installation and maintenance.
- * Security panels, grilles, automatic gates.
- * Boundary chain link & barbwire fencing, swimming pool fencing.

ASSOCIATIONS & MEMBERSHIPS

Engineering Taranaki Consortium - www.engineeringtaranaki.co.nz

CAPENZ- Centre of Applied Engineering New Zealand www.capenz.co.nz

Be Safe Taranaki · www.besafe.org.nz

Company Profile

This company was founded in 1953 and is now registered as *Meco Engineering Company Limited*.

Based on the original site, our Head office and fabrication workshops are in prime location on the Heavy haul route servicing Port Taranaki.

All workshops are well equipped with facilities for machining, light fabrication projects, pipe spooling, plant and general maintenance, structural steel, plate fabrication, and coded welding (NZ

4711 to ASME IX).

The success of the business is in its highly flexible workforce with no demarcation between trades. A number of the staff has been employed with the company for many years and all trades are supported by a highly qualified, professional management team.

In 1996 Meco Engineering Co Ltd attained Telarc registration of Q-Base no. 394 which incorporates our Quality Assurance and Health & Safety Policies.

Mission Statement

***A Quality management system for the manufacture and
Project management of light and heavy engineering,
Machining and stainless steel fabrication.***

A library file (hard copy and/or CD) is available at office reception
For viewing by prospective or interested parties.

General Facilities

WORKSHOP FABRICATION

GUILLOTINE	8' O UHE – optimum sheet Size 2240mm x 6mm plate 1830mm x 8mm plate 1200mm x 10mm plate
PRESS BRAKE	UHE 90 tonnes Size 2240 x 5mm plate 1830mm x 6mm plate 1200mm x 10mm plate
PLATE ROLLS	2500mm Pyramid slip type 280mm top and 280mm bottom rolls Range 2500mm x 20mm or 1000mm x 40mm
WELDERS	Mig Welders 400a at 100% Wire Feed (cored flux and solid) Mig Welder at 100% duty cycle Tig master, AC and DC Portable welding plant
HYDRAULIC PRESS	300 tonne capacity (pre-set beams)
VARIOUS	Magnetic Drills, Folder, Cut-off Saws, Power Hacksaws, Bench Grinders, Pedestal Grinders, 6" Pipe Bender (electric), 3" Pipe Bender (hydraulic), Test Pumps, Pipe Threader to 8" (electric), Pipe Threader to 3" (electric).

WORKSHOP MACHINERY

LATHES	<i>Moriseiki</i> type MR. Swing overbed 610mm diameter Swing overgap 840mm dia, gap 210mm Between centres 2400mm Victor type 1660. Swing overbed 760mm diameter Swing overgap 800mm dia, gap 200mm Wilson 8 1/2 Centre Lathe. Swing overbed 700mm, Between centre 2000mm.
MILLING MACHINE	Lagun universal milling machine, keyways etc.
BROADING MACHINE	keyways 1/8" – 3/4" 3mm – 16mm
RADIAL DRILL	Modigs type RBM, 28b capacity, number 3 morse taper.
SHAPER	Stroke 500mm mx, table 380 wide x 500 long Stokes/min variable 17- 43

Contracts

Meco Engineering Co Ltd has a wide and diversified customer base, offering small personal service to the domestic market as well as grand scale project management with major companies.

We have well established working relationships with these larger organisations:

Affco NZ Limited	Memcor Pty Limited
Air New Zealand	Methanex
ARCO NZ Limited	Mighty River Power
Bitumen Supplies Limited (BSL)	Mitre 10 Mega
BP Oil Limited	Mobil Oil
Cleland Construction Limited	New Plymouth District Council
Contact Energy	Olex Cables Limited
Dow Agrosiences NZ Limited	Petralgas Chemicals
Downer Engineering Power Limited	Petrocorp
Dynachem	Port Taranaki
Ensco Oceanics International	Robert Stone and Co
Expro Group	Rolls Royce Industrial Limited
Farmers Fertilizer Limited	Seatow Limited
Fitzroy Engineering Group	Sedco Forex International Drilling Inc
Fletcher Aluminium	Shell Oil
Fletcher Construction Limited	Shell Todd Oil Services Limited
Fonterra Dairy Company Limited	Sub Sea International
Ford Motor Co Limited	Swift Energy
Fuji Sumitomo Corporation	Taranaki Electric Power Board
Genesis Energy	Taranaki Healthcare
Golden Bay Cement	Taranaki Providers
Hamon Thermal Europe	Tegal Poultry
ICI Chemicals NZ Limited	The Expro Group
John Thompson NZ Limited	Toll Rail
Jord International	Watties NZ Limited
Liquid gas	Western Institute
MCK Metals	Zapata International

Projects.

Dynachem – Bell Block

Formaldehyde Plant Main Structural & Mechanical Contractor

BP Oil – New Plymouth

Relocation of depot

Main Structural & Mechanical Piping Contractor

Watties NZ Ltd (Heinz Watties Group) – Fielding

Installation of new Potato Chip Complex

Mechanical Contractor

New Plymouth District Council

- * Waste Water Treatment Complex
Installation of new pipe work
Treatment of Effluent Re-use System
- * Puke Ariki Museum & Library
Architectural metalwork and fit out
- * Standby generator installation
- * Airport baggage conveyor system
- * Central City Plaza area & Canopy

Methanex – Motunui

Durene load-out facility and handling

Piping & Mechanical Contractor plus structural packages

Taranaki Electric Power Board (Genesis Energy) – Eltham

Fit out of line vehicle

Hydraulics, Pneumatics, Structural, Bodywork & Electrical

Zapata International

Alterations & additions to Module facilities, fabrication & offshore installation

Ford Motor Company – Wiri Auckland

Installation of major plant, associated piping and structural work.

Swarf recovery system through factory.

Fletcher Aluminium – Hamilton

Anodizing tanks. Site installation & mechanical connections.

Tegel Foods – Bell Block

Plant modernisation, cooling tower, structural steel, refrigeration piping.

Jord International Pty Ltd – Australia

Fabrication of rotary filter for coal-mining operation.

Fabrication of rotary filter for sugar vacuum extraction.

Memcor Pty Ltd – Australia

Fabrication of Water filtration plant

Pak N Save Supermarket – New Plymouth

Waiwakaiho Valley Mega Centre – New Plymouth

Structural steelwork: fabrication and installation.

Hamon Thermal Europe – Huntly

Power Station E3p – cooling tower

Fuji Sumitomo Corporation – Kawerau Geothermal Power Station – cooling tower

Shell Todd Oil Services Ltd – New Plymouth

Offshore Marine Certified containers, structural steel, piping to all codes.

Downers – Wellington Renouf Tennis Centre – Main Structural contractor.

Robert Stone & Co Ltd – New Plymouth

Pipe furniture structural platforms for Kapuni Ammonia Urea upgrade
And Kinleith Timber Mill upgrade

Fitzroy Engineering Group Ltd – New Plymouth

Pipe furniture – structural steel supports
Kapuni Ammonia Urea upgrade.
Vessel fabrication for reactors. Heavy plate boiler ducting sections.

John Thompson NZ Ltd – Hamilton

Kiwi Dairy Co Ltd
Structural Steel galleries, platforms, walkways, heavy plate boiler
Ducting, mechanical & welding on site services.

Kiwi Dairy Company (Fonterra) – Hawera

Structural Steel, 4703 stainless steel piping, machinery installation.
Inglewood, Brixton, Okato
Stainless steel, carbon steel work packages.
Machinery, maintenance, etc.

Procom – New Plymouth

Structural steel & commercial doors for warehouse, retail premises

Liardet Street Apartments – New Plymouth Structural steelwork

Ryman Health Care Complex – New Plymouth

Structural steelwork, metal work, fixtures and fittings

Port Taranaki Project Greenhouse Offices – New Plymouth

Structural and architectural steelwork

Genesis - Huntly

EP3 Power Station, Cooling Tower

Mighty River Power – Kawerau

Geothermal Cooling Tower

Waiwakaiho Valley Mega Centre – New Plymouth

Structural steelwork: fabrication and installation.

Hamon Australia Pty Limited – Taupo

Contact Energy, Ohaaki Cooling Tower, Refurbishment

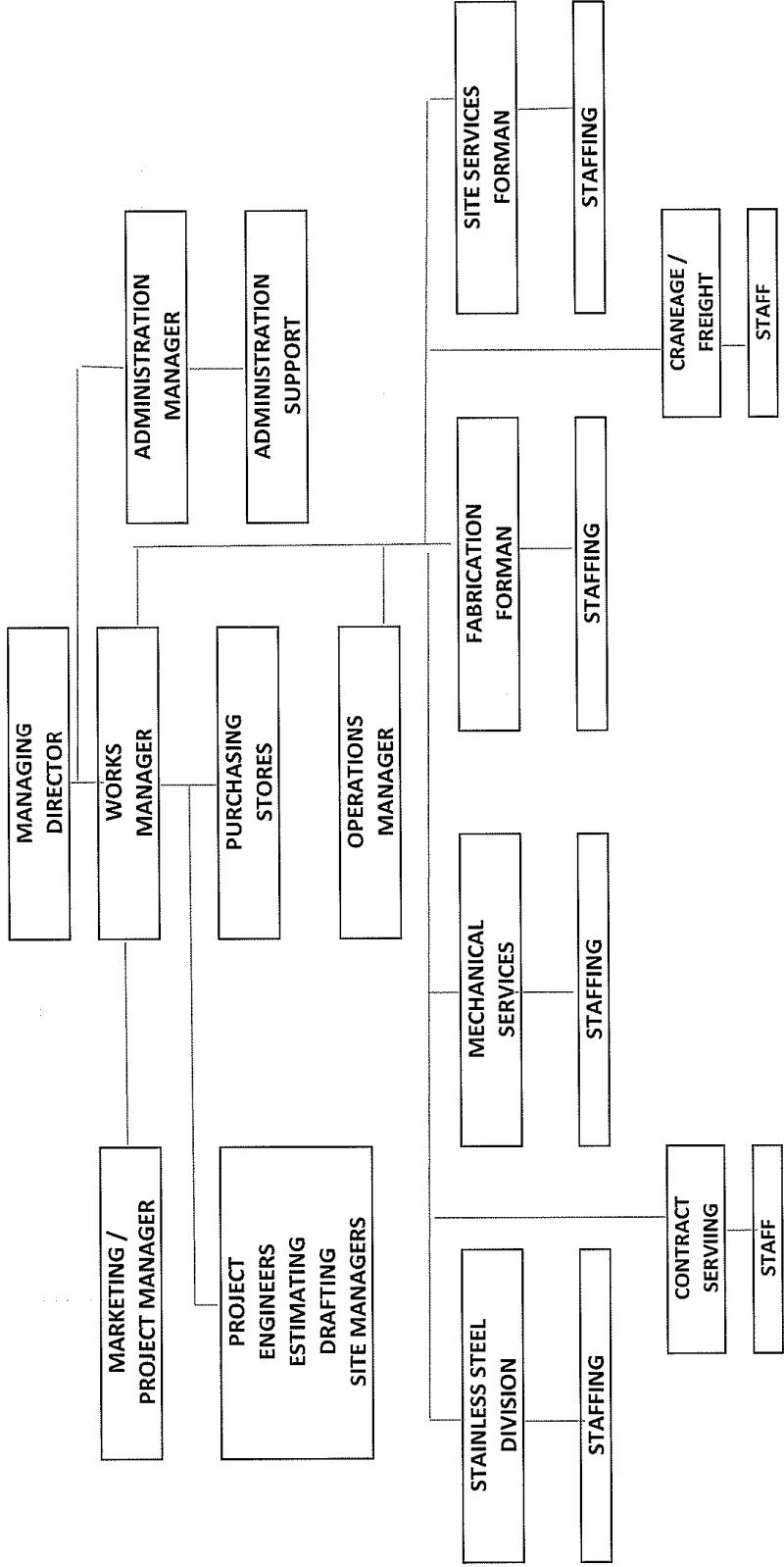
Cleland Construction Limited – New Plymouth

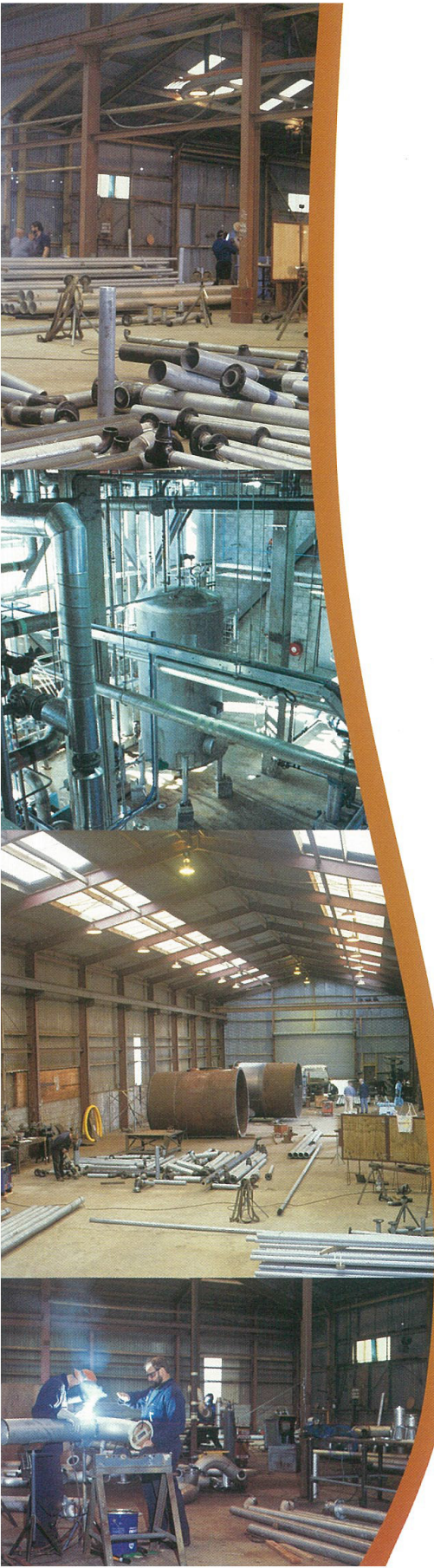
Len Lye Arts Facility, Structural Steel



LINES OF RESPONSIBILITY LINES OF COMMUNICATION

Key
Lines of Communication.....
Lines of Responsibility.....





MECO ENGINEERS

Company Services

MECO offers a wide service to the petrochemical, marine, food, commercial industry, residential and rural sector. Some include:

- **Fabrication:** Mild steel & alloy, vessels, tanks, pipework, heavy plate fabrication & sheetmetal work
- **Machining:** Turning, milling, shaping and drilling
- **Press Braking and Guillotining**
- **Plant Maintenance:** Installation and shutdown
- **Boiler Maintenance:** Comprehensive overhauls and statutory marine surveys, plus contract maintenance
- **Hydraulic - Pneumatics**
- **Compressor overhaul and Air Systems:** Compressor installation and maintenance in AIR and CNG
- **Contract servicing**
- **Structural fabrication and erection**
- **Stainless steel, aluminium fabrication and insulation**
- **Sheetmetal fabrication**
- **Security manual and automated gates**
- **Coded welding**
- **Mechanical maintenance and installation**
- **Security panels**
- **Security fencing:** Chain link and barb wire
- **Swimming pool fencing:** to local bylaws
- **Vehicle modification:** Extensive vehicle modifications for people with disabilities
- **Handrails:** To NZ standards - both architectural and disability

81 Breakwater Road • P.O. Box 6044 • New Plymouth • New Zealand
Ph 06 751 0339 • Fax 06 751 2567 • Email: webmail@meco.co.nz
Website: www.meco.co.nz



Company Profile

- MECO Engineering Co. Ltd was founded in 1953 and has been operating for approximately 50 years. The sole owner sold the business to its present owners in September, 1986. The Company is now registered as MECO Engineering Co. Ltd.
- The Company is situated on freehold industrial land and has 25,000 square metres of workshops and related buildings.
- The workshops are well equipped with facilities for machining, fabrication, pipe spooling, plant and general maintenance, structural steel, plate fabrication.
- The success of the Company is in its highly flexible workforce where the turnover of labour over the years is low. Most of our workforce have been with the Company for many years. Demarcation between trades is unknown.
- The workforce is supported by a highly qualified professional management team.
- In 1996 MECO Engineering Co. Ltd attained Registration of "Q" Base. Registration no. 394 which incorporated our Q.A. and Health and Safety Policy. Our "Q" Base philosophy is:

A quality management system for the manufacture and project management of light and heavy engineering, machining and stainless steel fabrication.

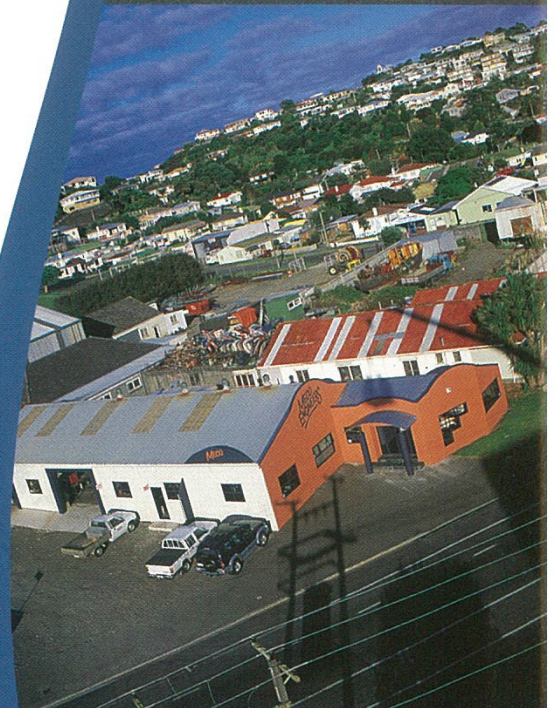
We welcome any prospective or interested parties to view our library copy held in our front office for your convenience.

- Comprehensive List of Welding Qualifications, from NZ 4711 to ASME IX.
- Health and Safety awareness.

**Whatever the job ...
Whatever the size ...**

NO PROBLEM

- **Site facilities/mobile Services:**
Mobile container workshops
Office - portacom facilities
Mobilisation anywhere in New Zealand
HIAB
- **Vehicle Fleet:**
To service our on site facility and customer needs
- we can come to you.
- **Design and build:**
The company has the ability to provide professional design and build to suit your needs.



MECO ENGINEERS

Company Services

STAINLESS STEEL DEPARTMENT:

- **Sheetmetal fabrication** - stainless steel, aluminium, copper, brass & mild steel
- **Welding, cutting, folding, bending, galvanising, powdercoating** - pipes, sheets & tube
- **Stainless steel balustrades** - interior & exterior
- **Wrought iron balustrades/screen panels/safety fences/gates**
- **Access rails** - shower & toilet grab rails
- **Ducting, exhausts & extraction hoods**
- **Specialised equipment & aids** - surgical, catering & disability
- **House accessories** - sun shade sail poles, guttering, downpipes, window & door trims
- **Automotive fittings** - mufflers, towbars & bumpers
- **Street furniture** - seats, benches, screen, bins, planter boxes & light fittings
- **Security fittings** - strong bars, grills, screens
- **Retail fittings** - shelving, racks, rails, dividers & display units
- **Art & design figures, ornaments, statues**



MECO ENGINEERING COMPANY LTD

81 Breakwater Road • PO Box 6044 • New Plymouth 4310 • New Zealand
Ph 06 751 0339 • Fax 06 751 2567 • Email webmail@meco.co.nz
www.meco.co.nz



Company Profile

Meco Engineering offers a comprehensive manufacturing engineering service to the petrochemical, marine, food, energy (power generation) and commercial industries, as well as the residential and rural sector.

Our success lies in the innovation we bring to every project – we're up for the challenge - whether that's a difficult curb-side fix-it job or a turn-key project on the international scene. Meco Engineering's culture is modeled on the old-school Kiwi ingenuity - everything and anything can be made to our clients' requirements.

Our workshops are fully equipped for machining, pipe spooling, plant and general maintenance, structural steel and plate fabrication, light fabrication including stainless steel and sheet-metal work.

Our comprehensive list of welding qualifications includes NZS4711, NZS4703, ASMEIX and AS1554. We also utilize a range of welding processes such as SMAW, FCAW, GTAW and GMAW.

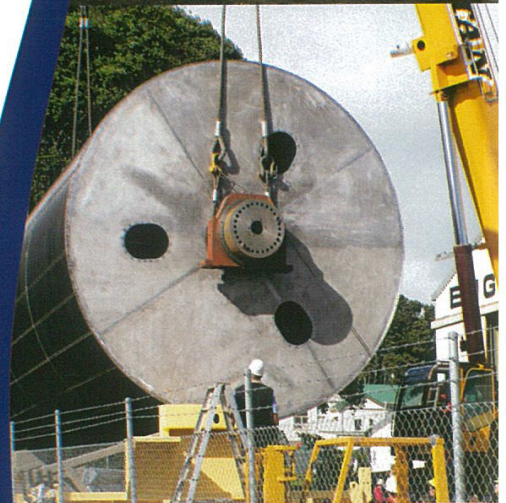
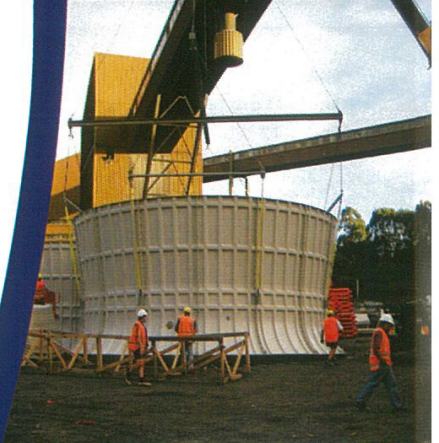
Meco services New Zealand-wide, as well as having established working relationships with reputable international clients. We offer first rate quality, creative and leading edge engineering, sound work ethics and competitive pricing.

We're flexible with a 24 hour on-call service any day of the year, with an extensive fleet of vehicles, craneage and mechanical handling gear.

As a TELARC registered engineering company, Meco's 50 plus qualified engineers and trades-people stand by the quality workmanship of all our products and services. Upholding the TELARC Quality Management System, we ensure our team adheres to our procurement, design, installation and reporting systems.

Health and Safety are absolutely paramount to Meco and we conscientiously comply with New Zealand and Australian standards. We are also geared up for the oil and gas industry's stringent health and safety requirements.

- **SITE FACILITIES/MOBILE SERVICES:**
Mobile container workshops
Office - portacom facilities
Mobilisation anywhere in New Zealand
- **VEHICLE FLEET:**
To service our on site facility and customer needs we can come to you.
Hiab, Crane, Telehandler, Scissor Lift
- **DESIGN AND BUILD:**
The company has the ability to provide professional design and build to suit your needs.



MECO ENGINEERS

Company Services

MACHINING DEPARTMENT:

- Mechanical fitting
- Thread cutting - external & internal
- Machining shafts & bushes
- Milling/keyway cutting
- Light surface grinding
- Drilling
- Equipment service & repair
- Vehicle modification for disabled people
- Compressor sales and service
- Hydraulic - pneumatic servicing



MECO ENGINEERING COMPANY LTD

81 Breakwater Road • PO Box 6044 • New Plymouth 4310 • New Zealand
Ph 06 751 0339 • Fax 06 751 2567 • Email webmail@meco.co.nz
www.meco.co.nz



Company Profile

Meco Engineering offers a comprehensive manufacturing engineering service to the petrochemical, marine, food, energy (power generation) and commercial industries, as well as the residential and rural sector.

Our success lies in the innovation we bring to every project – we're up for the challenge - whether that's a difficult curb-side fix-it job or a turn-key project on the international scene. Meco Engineering's culture is modeled on the old-school Kiwi ingenuity - everything and anything can be made to our clients' requirements.

Our workshops are fully equipped for machining, pipe spooling, plant and general maintenance, structural steel and plate fabrication, light fabrication including stainless steel and sheet-metal work.

Our comprehensive list of welding qualifications includes NZS4711, NZS4703, ASMEIX and AS1554. We also utilize a range of welding processes such as SMAW, FCAW, GTAW and GMAW.

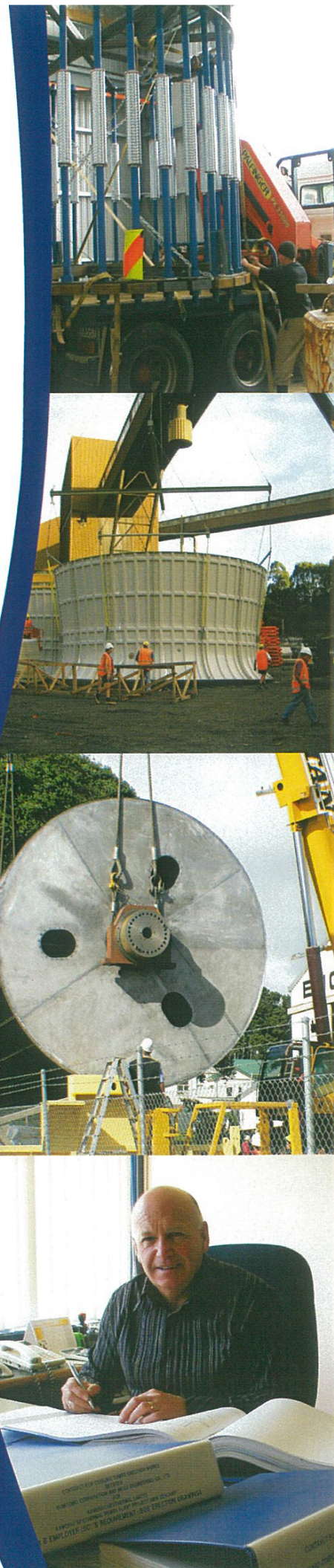
Meco services New Zealand-wide, as well as having established working relationships with reputable international clients. We offer first rate quality, creative and leading edge engineering, sound work ethics and competitive pricing.

We're flexible with a 24 hour on-call service any day of the year, with an extensive fleet of vehicles, cranes and mechanical handling gear.

As a TELARC registered engineering company, Meco's 50 plus qualified engineers and trades-people stand by the quality workmanship of all our products and services. Upholding the TELARC Quality Management System, we ensure our team adheres to our procurement, design, installation and reporting systems.

Health and Safety are absolutely paramount to Meco and we conscientiously comply with New Zealand and Australian standards. We are also geared up for the oil and gas industry's stringent health and safety requirements.

- **SITE FACILITIES/MOBILE SERVICES:**
Mobile container workshops
Office - portacom facilities
Mobilisation anywhere in New Zealand
- **VEHICLE FLEET:**
To service our on site facility and customer needs we can come to you.
Hiab, Crane, Telehandler, Scissor Lift
- **DESIGN AND BUILD:**
The company has the ability to provide professional design and build to suit your needs.





MECO ENGINEERS

ISUZU HIAB TRUCK/TRAILERS

- Max hiab load 8200kg
- Max hiab bucket reach 18m
- Max hiab radius 21m
- 45' semi & 30' trailer deck
- Load capacity 12 tonne
- Maneuverable short wheel base
- Pallet lifter accessory
- Low loader transport facility

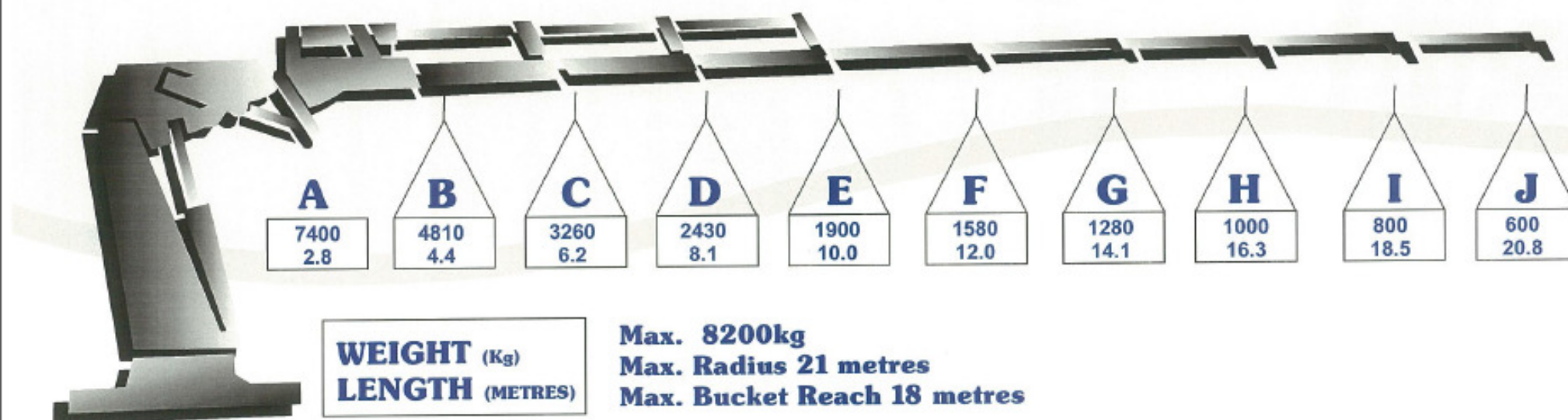
See reverse for specifications.



MECO ENGINEERING COMPANY LTD

81 Breakwater Road • PO Box 6044 • New Plymouth 4310 • New Zealand
Ph 06 751 0339 • Fax 06 751 2567 • Email webmail@meco.co.nz
www.meco.co.nz

HIAB & TRAILER HIRE

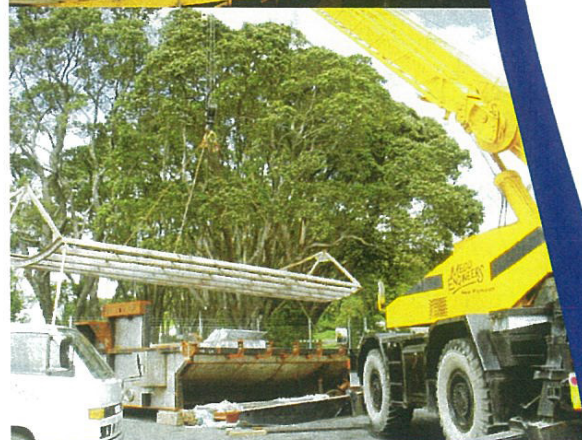
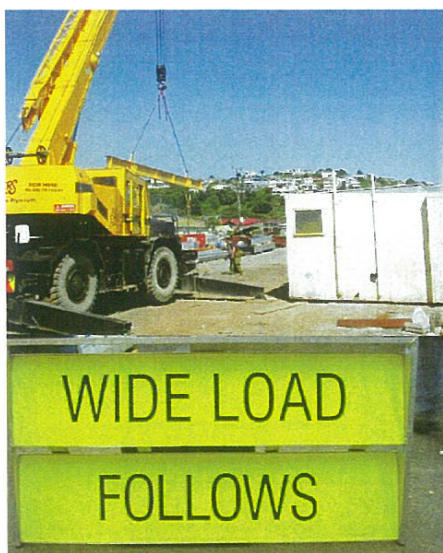


HIAB

- Deck Length - 4m
- Max Hiab Reach Capacity - 14m
- Max. Hiab Lift Capacity - 8200kg
- Max. Lift at 14m is 1280kg
- Carry Capacity - 12 Tonne
- Short Wheel base for tight spots

ADDITIONAL EQUIPMENT

- Pallet Lifter
- Certified Man Bucket (max. Reach 18m)
- 30' Trailer x 12000kg
- 20' Container Capacity with container lock
- 45' Trailer x 18000kg



MECO ENGINEERS

TADANO ALL TERRAIN CRANE

25 TONNE ROUGH TERRAIN

- Maximum lift 25 tonne
or 25,000kg @ 3.5m radius
- Working radius 2.5 - 26 metre
- Lift height 9 - 28.5 metre
- Outrigger options 3.15m + 3.15m = 6.3m
- Crane operating weight = 26,300kg
- Drive to site up to 30km from Mecos workshop in New Plymouth
- Low loader transport available outside 30km area.

See reverse for specifications.



MECO ENGINEERING COMPANY LTD

81 Breakwater Road • PO Box 6044 • New Plymouth 4310 • New Zealand
Ph 06 751 0339 • Fax 06 751 2567 • Email webmail@meco.co.nz
www.meco.co.nz

TADANO

ALL TERRAIN CRANE

Boom Length Working Radius (m)	9.0m	15.5m	22.0m	28.5m
2.5	25.0	19.4	12.5	
3.0	25.0	19.4	12.5	
3.5	25.0	19.4	12.5	8.0
4.0	23.0	19.4	12.5	8.0
4.5	21.2	18.0	12.5	8.0
5.0	19.4	16.7	12.5	8.0
5.5	17.8	15.5	11.7	8.0
6.0	16.3	14.4	11.0	8.0
6.5	15.1	13.4	10.4	8.0
7.0		12.5	9.8	7.6
8.0		10.7	8.7	6.9
9.0		6.45	7.7	6.2
10.0		6.95	6.8	5.65
11.0		5.75	6.1	5.15
12.0		4.85	5.4	4.7
13.0		4.1	4.65	4.3
14.0			4.0	4.0
15.0			3.5	3.7
16.0			3.1	3.4
17.0			2.75	3.0
18.0			2.45	2.7
19.0			2.15	2.4
20.0				2.15
22.0				1.75
24.0				1.4
26.0				1.15



MECO ENGINEERING COMPANY LTD
 81 Breakwater Road • PO Box 6044 • New Plymouth 4310 • New Zealand
 Ph 06 751 0339 • Fax 06 751 2567 • Email webmail@meco.co.nz
www.meco.co.nz

MECO ENGINEERS

MERLO TELEHANDLER

PANORAMIC VARIABLE REACH TRUCK

- Maximum load 4000kg
- Lift Height 16700mm
- Maximum forward reach 12500mm
- Speed 1st gear 0-16 km/hr
2nd gear 0-40 km/hr
- Low loader available for transport to site
- Man Basket available for work platform

See reverse for specifications.

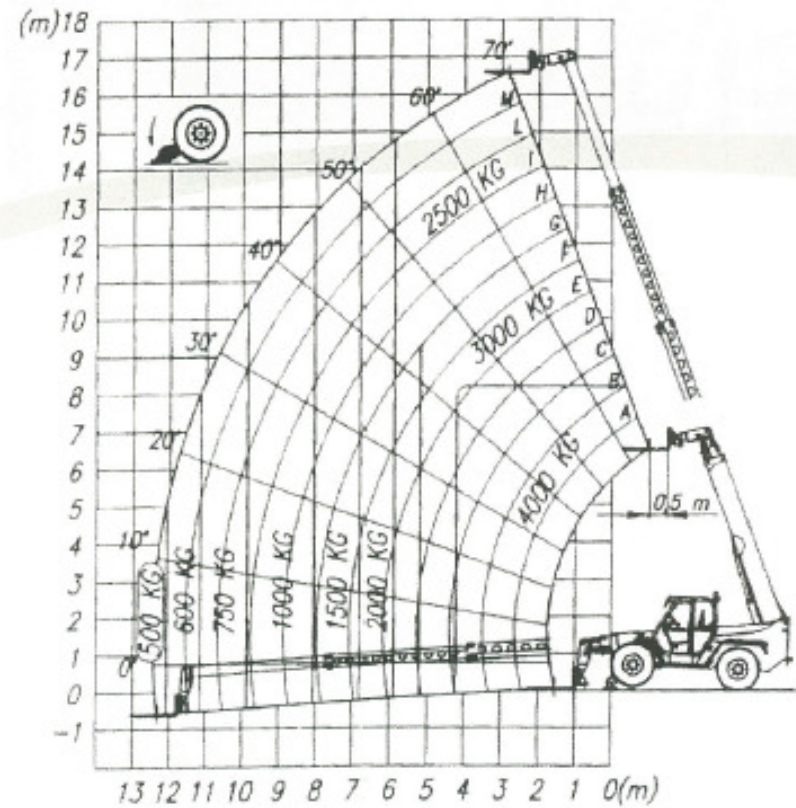
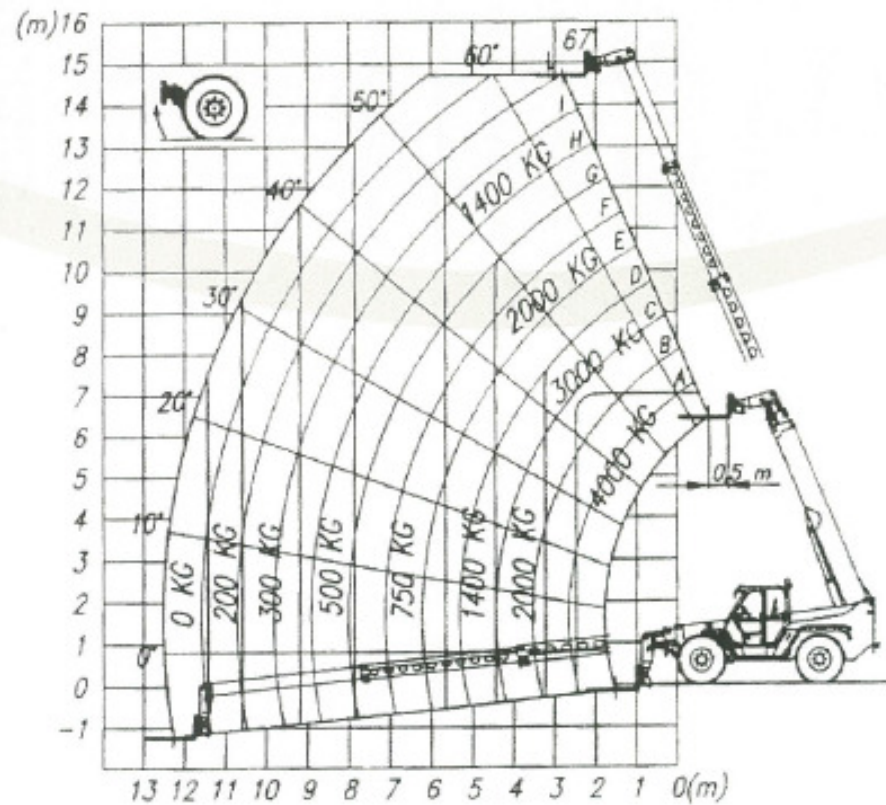


MECO ENGINEERING COMPANY LTD

81 Breakwater Road • PO Box 6044 • New Plymouth 4310 • New Zealand
Ph 06 751 0339 • Fax 06 751 2567 • Email webmail@meco.co.nz
www.meco.co.nz

MERLO TELEHANDLER

PANORAMIC VARIABLE REACH TRUCK



MECO ENGINEERING COMPANY LTD
 81 Breakwater Road • PO Box 6044 • New Plymouth 4310 • New Zealand
 Ph 06 751 0339 • Fax 06 751 2567 • Email webmail@meco.co.nz
www.meco.co.nz

MECO ENGINEERS

SNORKEL SCISSOR LIFTS

OUTDOOR MODEL SR 3370

A Working Height	12.12m
B Platform Size (length x width)	2.73 x 1.65m
C Roll Out Deck	1.2m
D Guard Rail Height	1.10m
Gradeability	35 degrees
Platform Capacity - Safe Workload	330 kg
Motive Power	Diesel
Gross Weight	3620 kg
Levelling Stabilizers	Yes
Lift Time	50 sec
Speed Below 2.4m	0-7.0 kph
Speed Above 2.4m	0-0.8kph
Transportable to Site	Yes
Tyres	Rough Terrain

INDOOR MODEL SR 3246

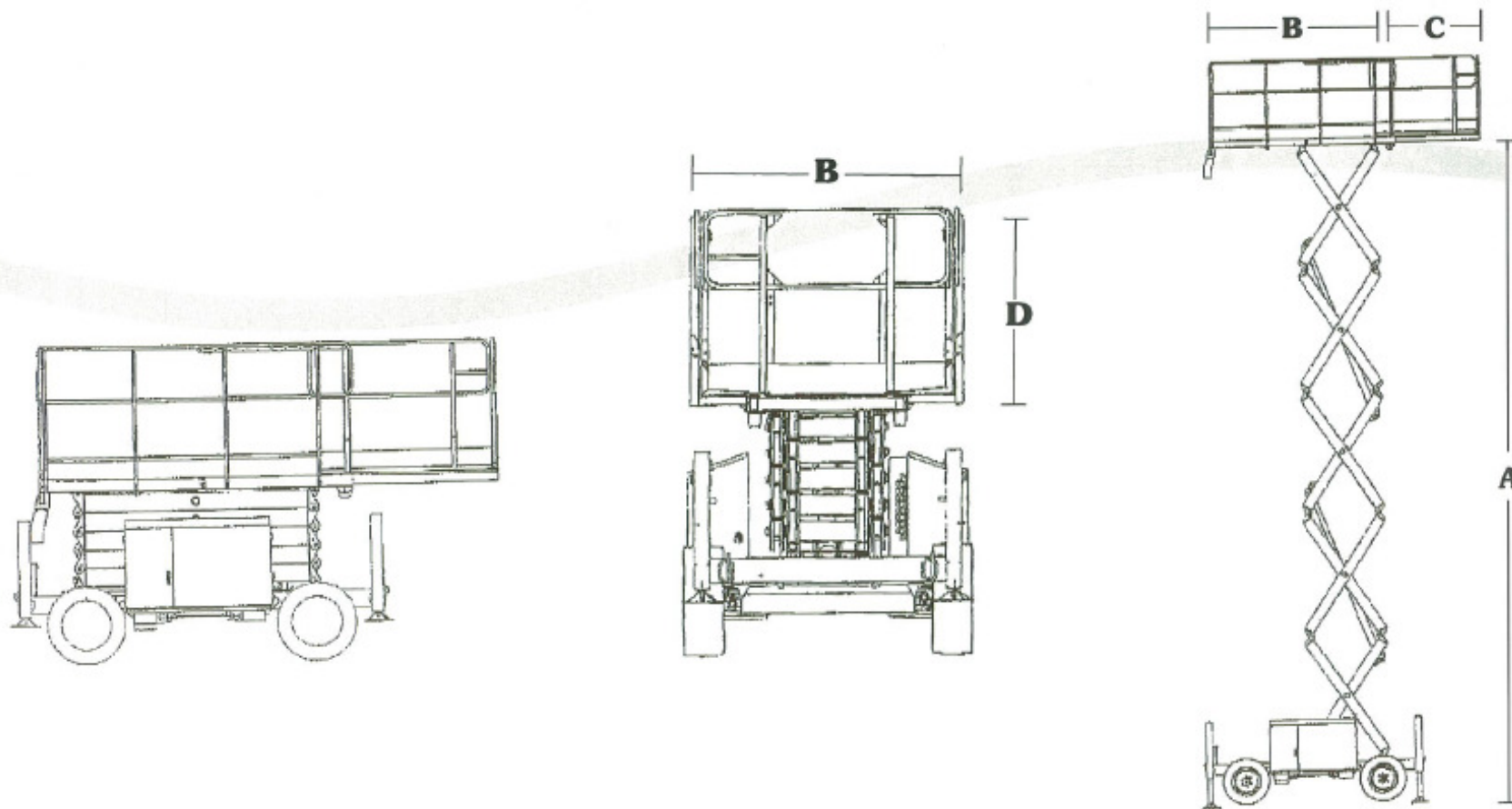
A Working Height	11.58m
B Platform Size (length x width)	2.30 x 1.14m
C Roll Out Deck	9.14m
D Guard Rail Height	1.10m
Gradeability	25 degrees
Platform Capacity - Safe Workload	317.5 kg
Motive Power	Electric
Gross Weight	3003 kg
Levelling Stabilizers	Yes
Lift Time	40-50 sec
Speed Below 2.4m	0-3.2 kph
Speed Above 2.4m	0-0.5kph
Transportable to Site	Yes
Tyres	Solid White




MECO ENGINEERING COMPANY LTD

81 Breakwater Road • PO Box 6044 • New Plymouth 4310 • New Zealand
Ph 06 751 0339 • Fax 06 751 2567 • Email webmail@meco.co.nz
www.meco.co.nz

SNORKEL SCISSOR LIFT TECHNICAL SPECIFICATIONS



MECO ENGINEERING COMPANY LTD
81 Breakwater Road • PO Box 6044 • New Plymouth 4310 • New Zealand
Ph 06 751 0339 • Fax 06 751 2567 • Email webmail@meco.co.nz
www.meco.co.nz



MECO ENGINEERS

COOLING TOWER SERVICES

Meco Engineering Company Ltd offers an expert and comprehensive service for the construction and maintenance of cooling towers in the Energy industry.

- Fibre-glass infill gluing, preparation, installation repairs and replacement
- Tower framework construction - elevation and installation
- Fan stack assembly, repairs and installation
- Fan blade repairs and replacement
- Mechanical power reduction drive unit assembly, replacement and repairs
- Qualified project management, engineering supervision and trade staff
- On-site capabilities including labour demands, expertise, equipment and machinery
- Experience includes the construction and consideration of several major projects with International significance.



MECO ENGINEERING COMPANY LTD

81 Breakwater Road • PO Box 6044 • New Plymouth 4310 • New Zealand
Ph 06 751 0339 • Fax 06 751 2567 • Email webmail@meco.co.nz
www.meco.co.nz

Company Profile

Meco Engineering offers a comprehensive manufacturing engineering service to the petrochemical, marine, food, energy (power generation) and commercial industries, as well as the residential and rural sector.

Our success lies in the innovation we bring to every project – we're up for the challenge - whether that's a difficult curb-side fix-it job or a turn-key project on the international scene. Meco Engineering's culture is modeled on the old-school Kiwi ingenuity - everything and anything can be made to our clients' requirements.

Our workshops are fully equipped for machining, pipe spooling, plant and general maintenance, structural steel and plate fabrication, light fabrication including stainless steel and sheet-metal work.

Our comprehensive list of welding qualifications includes NZS4711, NZS4703, ASMEIX and AS1554. We also utilize a range of welding processes such as SMAW, FCAW, GTAW and GMAW.

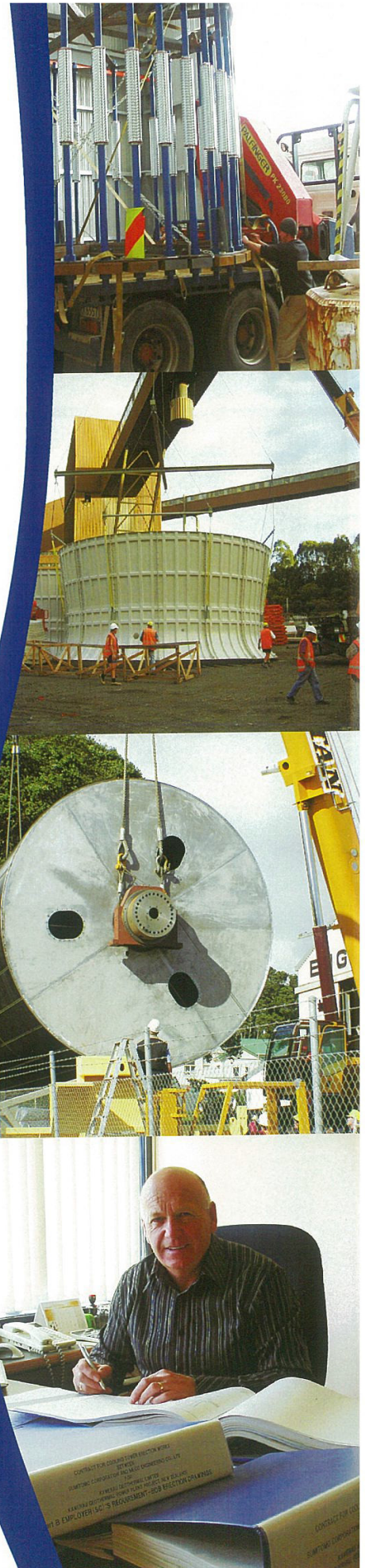
Meco services New Zealand-wide, as well as having established working relationships with reputable international clients. We offer first rate quality, creative and leading edge engineering, sound work ethics and competitive pricing.

We're flexible with a 24 hour on-call service any day of the year, with an extensive fleet of vehicles, craneage and mechanical handling gear.

As a TELARC registered engineering company, Meco's 50 plus qualified engineers and trades-people stand by the quality workmanship of all our products and services. Upholding the TELARC Quality Management System, we ensure our team adheres to our procurement, design, installation and reporting systems.

Health and Safety are absolutely paramount to Meco and we conscientiously comply with New Zealand and Australian standards. We are also geared up for the oil and gas industry's stringent health and safety requirements.

- **SITE FACILITIES/MOBILE SERVICES:**
Mobile container workshops
Office - portacom facilities
Mobilisation anywhere in New Zealand
- **VEHICLE FLEET:**
To service our on site facility and customer needs we can come to you.
Hiab, Crane, Telehandler, Scissor Lift
- **DESIGN AND BUILD:**
The company has the ability to provide professional design and build to suit your needs.





Vero Insurance NZ Ltd
10 Devon Street East
P O Box 8134
New Plymouth

jarred_cunningham@vero.co.nz
T: 06 759 4758
F: 06 759 4620

29 March 2018

Certificate of Currency

This certificate confirms details of the insurance cover for

Name of insured	Meco Engineering Co Limited
Interest insured	Management Liability
Location	Anywhere in New Zealand
Type of cover	Management Liability
Sum insured	General & Products Liability \$10,000,000
Period of insurance	From 01/04/2018 to 01/04/2019 at 4pm
Claims Excess	\$500
Policy number	VLE-4951161
Interested Party	n/a

Please refer to the policy document and schedule for the full policy terms, conditions and exclusions which may limit the scope of this insurance cover.

A handwritten signature in black ink, appearing to be "R. Jacob", written in a cursive style.

Rochelle Jacob
Vero Central Region Sales



Vero Insurance NZ Ltd
10 Devon Street East
P O Box 8134
New Plymouth

jarred_cunningham@vero.co.nz
T: 06 759 4758
F: 06 759 4620

29 March 2018

Certificate of Currency

This certificate confirms details of the insurance cover for

Name of insured	Meco Engineering Co Limited
Interest insured	Commercial Motor Fleet
Location	Anywhere in New Zealand
Type of cover	Commercial Motor
Sum insured	Motor Fleet \$197,000 Vehicle Third Party Liability \$10,000,000
Period of insurance	From 01/04/2018 to 01/04/2019 at 4pm
Claims Excess	1 % of vehicle Sum Insured minimum \$500
Policy number	HOTMF4005093
Interested Party	n/a

Please refer to the policy document and schedule for the full policy terms, conditions and exclusions which may limit the scope of this insurance cover.

A handwritten signature in black ink, appearing to be "R. Jacob", written in a cursive style.

Rochelle Jacob
Vero Central Region Sales

CONDITIONS OF SALE

1.0 TERMS AND CONDITIONS

1.1 This quotation is based on the Conditions of Supply as stated hereunder.

1.2 No variation or cancellation of any of these Conditions shall be binding unless expressly agreed to by the Company in writing.

2.0 PRICES

2.1 The prices quoted are subject to labour and material price fluctuations and the Customer will be invoiced at the prices ruling at the date of dispatch.

2.2 Unless expressly included GST and any other duties assessed or levied in connection with the supply of services or the installation of goods are payable in addition to the price.

3.0 CREDIT TERMS

3.1 Payment in full shall be made to the Company by the 20th day of month following the date of dispatch. The Company reserves the right, however, to render claims to the Buyer for progress payments at such intervals as the Company shall determine in its sole discretion in which case payment shall be made on the date(s) specified in the progress claim.

3.2 Interest shall be payable on overdue accounts at the rate of TWO PER CENTUM (2%) per month to run from the due date for payment thereof until receipt by the Company on the full amount payable.

3.3 The Customer shall pay all legal costs incurred in recovering overdue accounts.

3.4 The Company may refuse to deliver any goods or undertake any service if there are any outstanding monies owing to it by the Buyer.

4.0 DIMENSIONS FOR QUOTATION

4.1 The dimensions of all goods and materials quoted hereunder have been taken from plans, specifications, measurements or information supplied by the Buyer and the Buyer warrants that such plans, specifications, measurements or information is correct and can be relied upon.

5.0 EXCLUSIONS OF LIABILITY

5.1 The Company makes no condition, statement, warranty or representation, whether express or implied, written or oral, in respect of the goods or any part thereof. The obligations and liabilities of the Company and the remedies available to the Buyer under these Conditions of Sale are exclusive. The Buyer hereby waives and releases the Company from all other warranties, obligations and liabilities whether arising before or under this contact, and from all other rights, claims and remedies express or implied arising by law or otherwise.

5.2 The Company shall not be liable for any loss of profits or any other consequential loss or damage suffered by the Customer in consequence of any defect in materials or workmanship of the goods.

5.3 The Company will replace or repair materials considered by it, not to be merchantable or to specification at the date of delivery.

6.0 CLAIMS FOR ERRORS OR SHORT DELIVERY

6.1 Claims for errors or short supply must be made within 14 days of the date of dispatch.

7.0 NON DELIVERY AND DELAYS

7.1 The Company shall not be liable in any way whatsoever for any failure to expedite the work on time or non delivery or delay caused directly or indirectly by war, act of God, strike, lockout, riot, Government action or interference, fire, earthquake, material shortage, late delivery by manufacturers, shipping or transport delay or any other cause beyond the reasonable control of the Company.

7.2 The Buyer shall be bound to accept and pay for the goods delivered within a reasonable time after any such cause where the failure to expedite the work on time has ceased to operate.

8.0 VARIATIONS

8.1 Any variations required to this quotation must be authorised and made in writing. All variations or additions will be subject to additional charges that must be approved in writing by the Buyer before production continues.

9.0 CONTRACT WITHDRAWAL

9.1 This quotation is open for acceptance for a period of 30 days from the date of quotation but subject in every case to the Company's right to withdraw at any time before acceptance.

10.0 CONTRACT ACCEPTANCE

10.1 Approval and acceptance of quotation must be given by the Buyer in writing by signing this quotation and/or forwarding to the Company an order number and on signing such approval and acceptance the Buyer is deemed to have checked and approved the dimension of the goods and materials shown hereon as being correct.

10.2 Manufacture of the goods will be undertaken specifically in accordance with the instructions contained herein and no job will be commenced until a signed approval and acceptance as aforesaid, is received by the Company.

10.3 Twenty-one days minimum notice is required to enable scheduling, requisition of materials and production of the components listed.

10.4 Copies of the plans and specifications originally supplied for quotation together with any other relevant information must be supplied at acceptance.

11.0 OWNERSHIP OF GOODS

11.1 Ownership of goods supplied by the Company to the Customer is retained by the Company until payment in full is made for the goods supplied and for all other goods supplied by the Company to the Customer.

11.2 The Company, its servants and agents, may immediately without giving the Customer any notice or waiting time, retake possession of the goods supplied or any other goods supplied by the Company under any other arrangement under which title in those goods is still retained by the Company.

11.3 The Customer gives the Company leave and licence for its servants and agents to enter and remain upon any land or premises wherein the goods which in the opinion of the Company may be and take possession of the said goods.

12.0 WAIVER

12.1 The failure on the part of the Company to exercise and enforce any rights conferred by this contract shall not be deemed to be a waiver of any such right nor operate so as to bar the exercise or enforcement thereof at anytime or times thereafter.

JANUARY 2017



Telarc.
The Mark of Success



This is to certify that

MECO Engineering Co Ltd

81 Breakwater Road Moturoa New Plymouth

having been assessed by Telarc SAI Limited and having been found to operate a quality management system conforming to

Q-Base Code:2001

is hereby designated

Telarc Registered
for the following goods and services

No. 394

A quality management system for the manufacture and project management of light and heavy engineering, machining and stainless steel fabrication.



Certificate Issued: 12 July 2017

Current Registration: 12 July 2017

Chairperson

David Bone

Original Registration: 6 November 1996

Expiry Date: 14 July 2020

Chief Executive

Philip Cryer



Registered by Telarc SAI Limited 626 Great South Road, Ellerslie, Auckland 1051, Private Bag 28901, Remuera, Auckland 1541, Telephone: 64 9 525 0100 Facsimile: 64 9 525 1900 and subject to the Telarc SAI Limited Terms and Conditions for Certification. While all due care and skill was exercised in carrying out this assessment, Telarc SAI Limited accepts responsibility only for proven negligence. To verify that this certificate is current please contact Telarc SAI Limited admin@telarc.co.nz. This certificate and its associated schedules remain the property of Telarc SAI Limited and must be returned if registration is withdrawn.



SCHEDULE TO CERTIFICATE OF REGISTRATION

Registration Number: 394

Certificate Issued: 12 July 2017

MECO Engineering Co Ltd

Site Details:

Organisation	Address	Suburb	City	
MECO Engineering Co Ltd - (5872)				
MECO Engineering Co Ltd	81 Breakwater Road	Moturoa	New Plymouth	NZ

Scope of certification:

A quality management system for the manufacture and project management of light and heavy engineering, machining and stainless steel fabrication.

Registered by Telarc SAI Limited 626 Great South Road, Ellerslie, Auckland 1051, Private Bag 28901, Remuera, Auckland 1541, Telephone: 64 9 525 0100 Facsimile: 64 9 525 1900 and subject to the Telarc SAI Limited Terms and Conditions for Certification. While all due care and skill was exercised in carrying out this assessment, Telarc SAI Limited accepts responsibility only for proven negligence. To verify that this certificate is current please contact Telarc SAI Limited admin@telarc.co.nz. This certificate and its associated schedules remain the property of Telarc SAI Limited and must be returned if registration is withdrawn.